

Matrix

SMALL TABLES

A scenographic table with a strong visual impact. A contemporary design language, based on lightness and essentiality, turns into a complex play of geometric elements, with different heights and dimensions. Evolution of the Matrix bookcase, the table features a black chrome finishing and adjustable shelves covered in saddle leather with stitching on borders, according with the new mood permeating the collection.



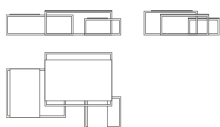
Central table with varnished steel square tubular structure, welded and joined with retractable pins, Black Chrome finishing.

Moveable table tops in MDF, shaped with CNC technology, covered in dark brown saddle leather, with visible tone on tone stitching in nylon thread.

SMALL TABLES

Central table with varnished steel square tubular structure, welded and joined with retractable pins, available in the finishes from Gianfranco Ferré Home Collection.

Moveable table tops in MDF, shaped with CNC technology, covered in leather/fabric from Gianfranco Ferré Home Collection, with visible tone on tone stitching in nylon thread.



F.MTX.232.AMX

Central table

Standard features

L 154 D 110 H 33 cm

L 60.63 D 43.31 H 12.99 in